

Glue Paintings – Instructions by Dotty Noll

Items needed:

Favorite saying or design

Pencil and/or tracing paper

Elmer's white glue or fabric glue (glue gun could be used if you can avoid "strings")

Sign surface: Canvas, foam board, thick cardboard, shoe box lid

Spray paint of desired background color

Tissue or paper towel

Embellishment paints or items like shells, jewelry, beads, etc.

Directions:

1. On your clean surface draw/trace your design with a pencil. If using a light color background, did not make lines real dark. Should be okay as long as glue covers lines.

2. After making sure that glue nozzle is clear, cover the design with glue smoothly. Make sure you don't press the glue down as you apply. Start at the top of the canvas and work down. This avoids rubbing your hand or forearm against the glue as you go. Find a steady squeeze and speed as you go so lines don't get globs.

3. Allow to dry for 24 hrs.

4. Find your favorite spot to spray paint, and spray the entire canvas, don't forget the edges! Allow to dry. Check if it needs a second coat.

5. When dry embellishments like highlighting around the letters with a narrow brush and paint can really make the lettering pop. Also, adding items like shells, or beads can add to the texture of the sign.

HAVE FUN AND BE CREATIVE!



Glue Painting – Instructions by Amy Scheg

Supplies:

A surface – stretched canvas, canvas panel, posterboard. See Dotty's instructions for more suggestions.

Paints – acrylics or watercolors

Glue – hot glue, Elmer's, Tacky Glue, etc. Puffy paint can be used.

Graphite paper

Pencil

Paint brushes

Water

Paper towels

These are a simplified version of the instructions on the Covid Videos #2 on our website. In that video, I painted with glue for the first time with different supplies and you can see the results and decide which you would like to try.

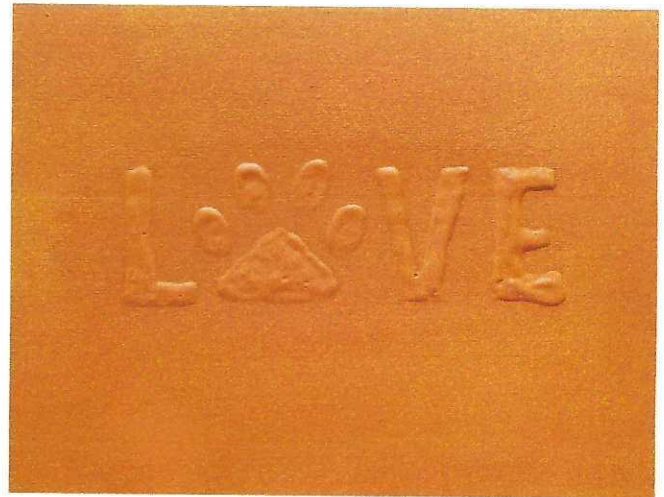
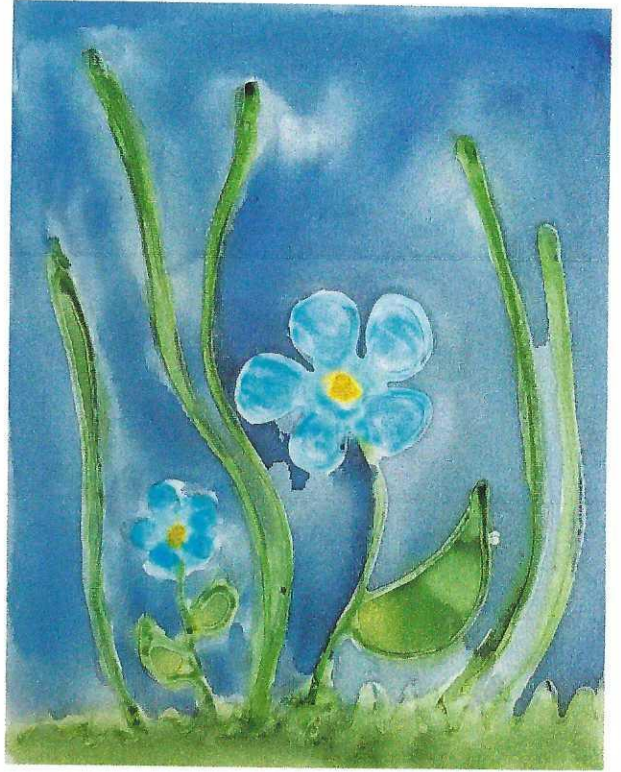
The three examples I did on the video are included in this packet.

Steps:

1. Gather your supplies
2. Choose your design and a surface sized for it. You can enlarge or decrease the size of any of the designs when you print them if you want.
3. Center your design on your surface and put a piece of graphite paper under it, making sure the graphite is facing the surface. You can use some tape to hold your design in place, but you will see on the video that I just held it.
4. Trace your design with a pencil or pen, no need to press too hard. Carefully lift the edge to make sure your design transferred before taking the design up.
5. Using your glue of choice, go over the design with the glue.
6. Allow the glue to dry – overnight is best.
7. Paint your design with your chosen paint.

Watercolor variation:

1. Do not trace a design. You do not want any graphite or pencil marks on your surface. Just freehand a design. Allow to dry.
2. Color in with water colors in a more abstract way.



The Best
of Us



All you need is

L  **VE**

Crafting

IS MY HAPPY PLACE